



World Forum for a Responsible Economy
Et demain, on mange quoi ?
Lille, 19th of October, 2017
Christophe Rupp-Dahlem



WE ARE A GLOBAL PLAYER





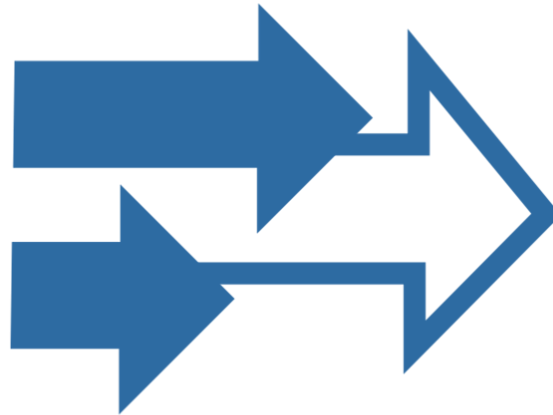
ROQUETTE

Offering the best of nature™

OUR SOLUTIONS FOR
TODAY AND TOMORROW



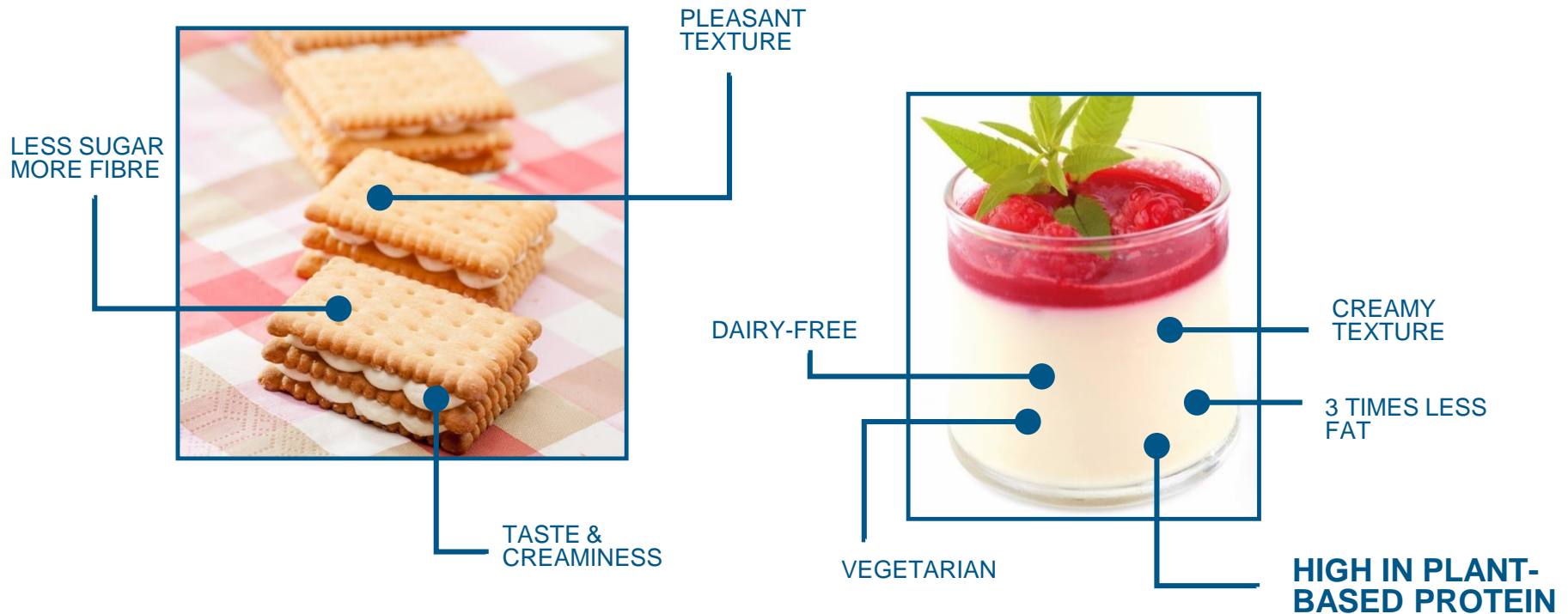
DELIVERING OUTSTANDING TECHNOLOGICAL, NUTRITIONAL AND HEALTH BENEFITS SOLUTIONS



700+ winning solutions

- **Proteins**
- Fibres
- Maltodextrins
- Polyols
- Native and modified starches
- Dextrose
- Glucose syrups

EXAMPLES OF OUR SOLUTIONS IN NUTRITION AND FOOD



We bring high-value nutritional and functional ingredients to our markets, backed by the co-creation services our customers require.



ROQUETTE

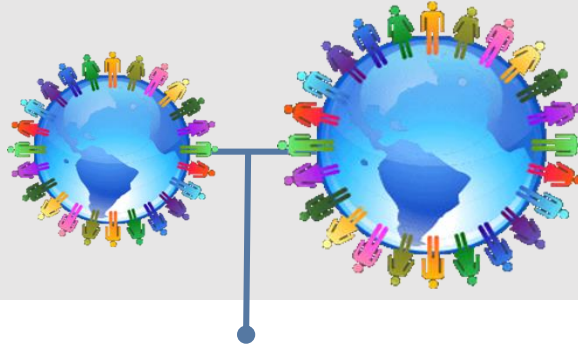
Offering the best of nature™

PLANT BASED PROTEINS



The indispensable Food revolution

The World is facing a
**CHANGING &
GROWING PROTEIN**
global demand



in 2050*

9 to 10 **billion** people to feed
+ 80 % demand for food
Different Food consumption
habits



with **Multiple sustainability challenges****



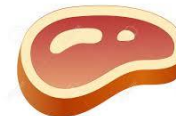
Over 1,6 billion people are
facing **water shortage**



By 2020, global emissions will
increase by **33%** from 2002 levels



+ **82%**
between **2000** and **2050**



+ **102%**

Consumption of
meat and dairy
products should
increase
< by

We need between
10 and 15 kg of
plant proteins...



... to produce
**1kg of animal
protein**



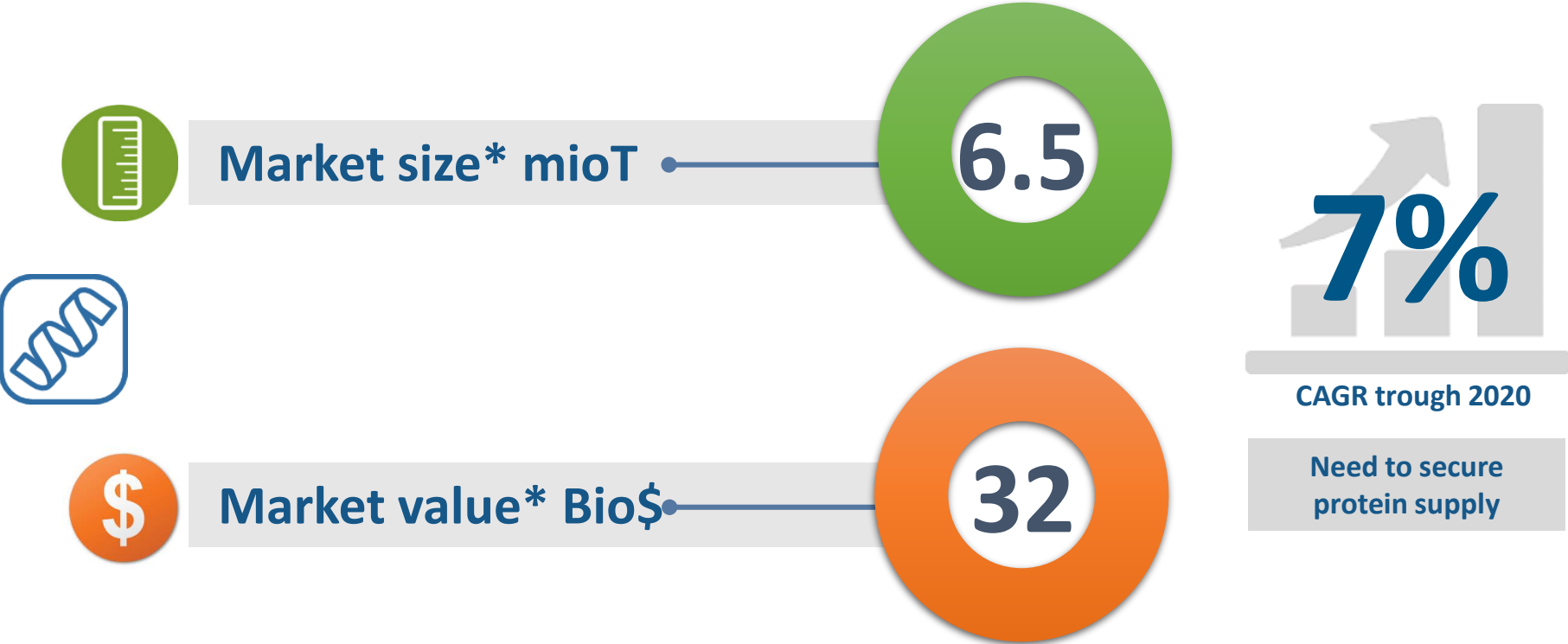
Animal feed requires
40 to 120 L of water to
produce **1 kg** of protein!



*: www.fao.org – FAO, 2009, How to feed the world in 2050

** : McKinsey Global Institute: World Economic Forum: The Guardian: The Climate Group, SMART 2020; IFAD Rural Poverty Report 2011

GLOBAL PROTEIN INGREDIENTS FOR HUMAN NUTRITION



* Source: Frost & Sullivan, Challenges Facing the Food & Agriculture Sector and Implications on the Global Protein Ingredients Market , Aug 2015

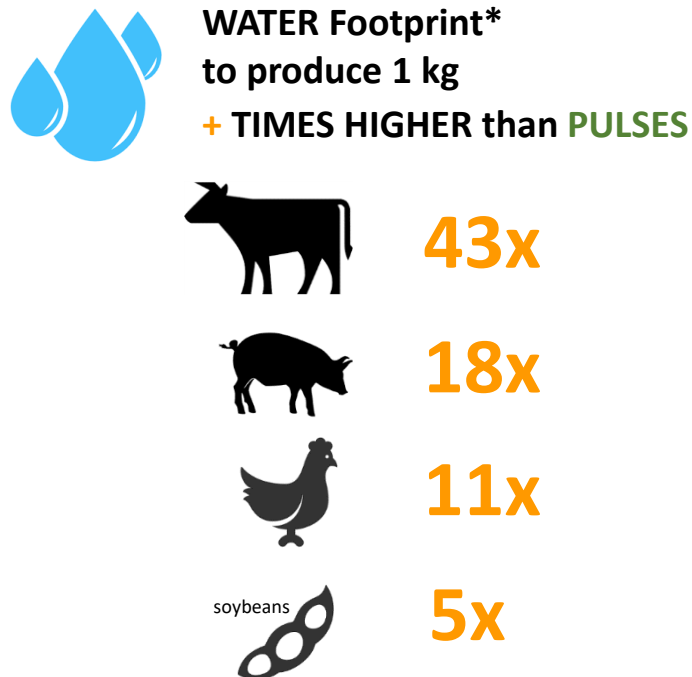
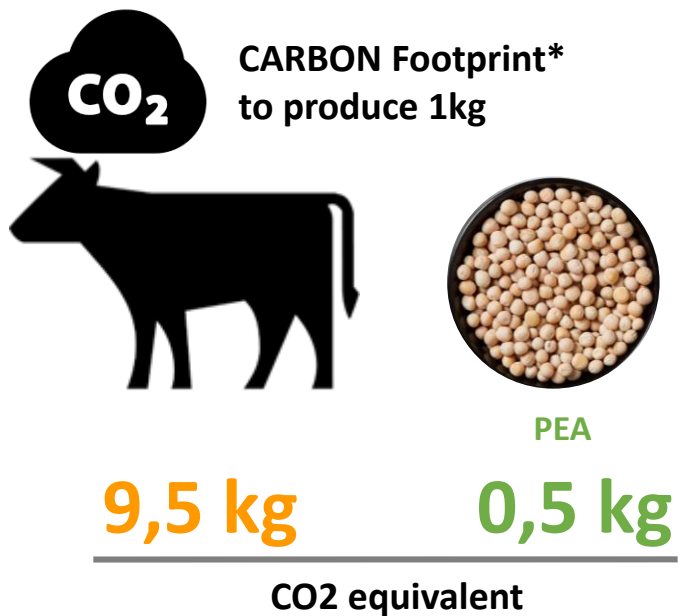


Yellow PEA : a powerful
source of plant protein



YELLOW PEA BENEFITS

YELLOW PEA is GREEN



*Source: Environmental Working Group (2011) Meat Eater's Guide to Climate Change and Health
<http://www.ewg.org/meateatersguide/>

YELLOW PEA BENEFITS



YELLOW PEA is GREEN

An amazing and **exemplary** agricultural resource



Nitrogen-fixing plant

> Improves soil fertility

**Environment impact* on growing peas in between
2 wheat crops:**



- 11% energy consumption

- 14% greenhouse gases

* Source: 2015 INRA study on leguminous plants for sustainable food and farming systems

YELLOW PEA BENEFITS



SUSTAINABLE
PLANT PROTEINS

YELLOW PEA, a Powerful source of PLANT PROTEIN



More than **20%** raw **protein** on average



Allergen Friendly



Non Genetically modified



Gluten-free



Zero Cholesterol



Vegan / Vegetarian / Flexitarian friendly



Sugar free



Low Glycaemic index



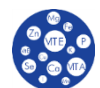
Source of dietary fibre



Rich in nutrients



High content of iron and zinc



Balanced amino acid profile



ROQUETTE, PEA PROTEIN WORLD WIDE LEADER



SUSTAINABLE
PLANT PROTEINS

Last investments to contribute to the growth of the company as a global Food, Nutrition and Health leader



Vic-sur-Aisne (France) : First investments for pea in 2000s
2015 : 40€ million investment
2017 : 40€ million investment



Manitoba (Canada) : Greenfield
2017 : 300€ million investment

Globally in 2019 : 250 000 tons/y as PRODUCTION CAPACITY



ROQUETTE
Offering the best of nature™

PEA PROTEIN SPECIALTIES for FOOD, NUTRITION & HEALTH

Food (Baking, Savoury, Dairy, Beverages...)
Specialized nutrition
Pharma



- ▶ **Trusted / Competitive / Unique**
 - Functionnal properties
 - Solubility
 - Nutritional properties
 - Alternative to other protein sources (animal, dairy, soy, wheat)



ROQUETTE

Offering the best of nature™

To be the natural source of innovative plant-based ingredients
and formulations for highly demanding industries